

# TEXAS PNEUMATIC TOOLS, INC.

Service, Operation AND Parts Manual

## **SAND RAMMER** **TX-70B & TX-70B-NR (Non-Revolving)**



Suggested Hose Whip  
Assembly: TX-2HW

TOOL  
SPECIFICATIONS

PART #	WEIGHT	LENGTH	AIR CONSUMPTION	BORE	STROKE	BPM	TAPER	INLET	MINIMUM HOSE SIZE
TX-70B & TX-70B-NR	6.4 lbs. 2.9 kg	16.25" 413 mm	15 CFM 425 L/mn	1" 25 mm	2" 51 mm	2500	802	1/4" NPT	1/2" 13 mm

~ Made in U.S.A. ~

[www.airtools.com](http://www.airtools.com)

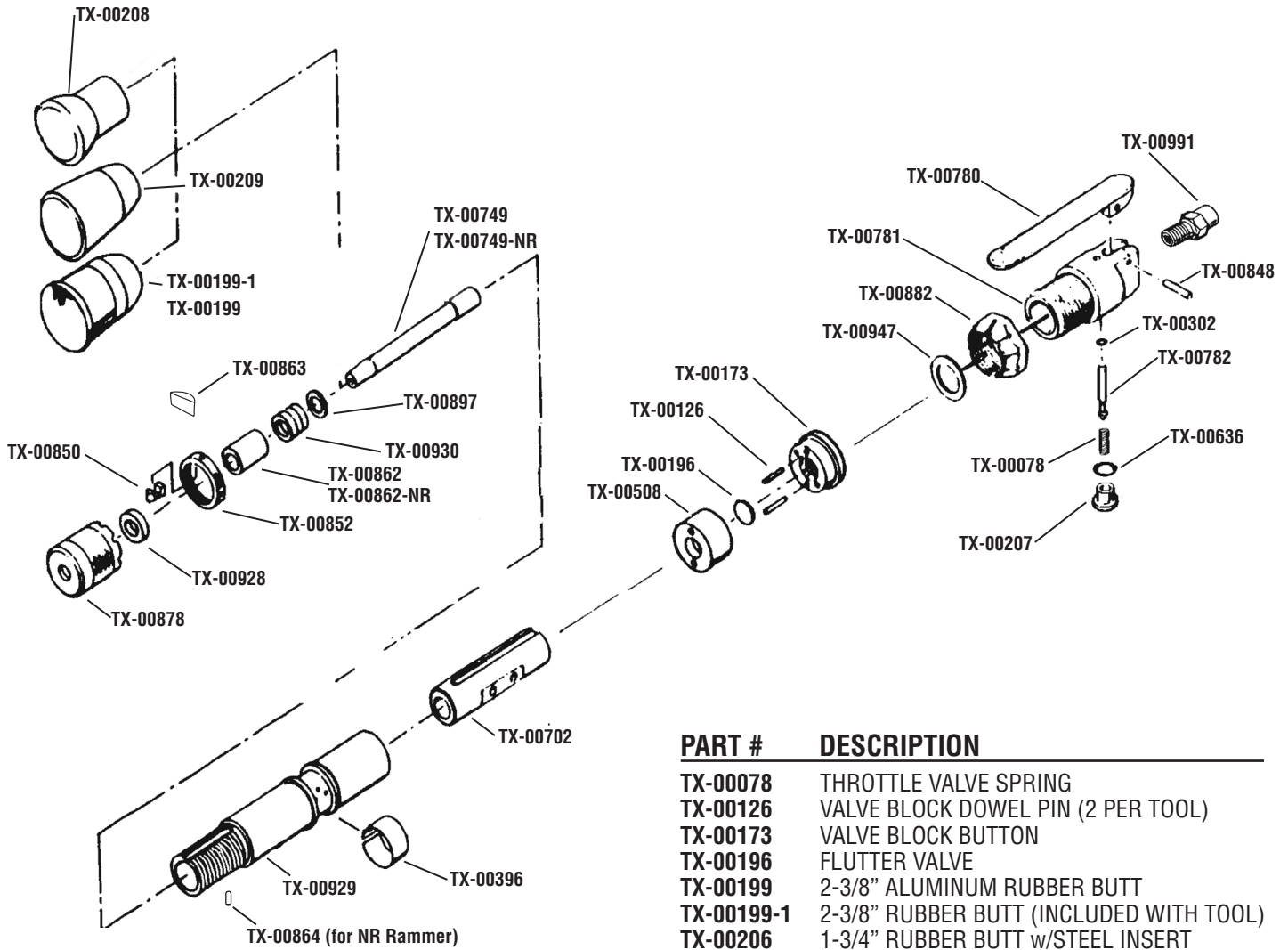
Email: [tptinfo@airtools.com](mailto:tptinfo@airtools.com)

TEXAS  
1-800-231-9740  
254-587-2533 (Int'l calls)

NEVADA  
1-800-858-1222

VIRGINIA  
1-800-626-1091

MICHIGAN  
1-877-575-5733



PART #	DESCRIPTION
TX-00078	THROTTLE VALVE SPRING
TX-00126	VALVE BLOCK DOWEL PIN (2 PER TOOL)
TX-00173	VALVE BLOCK BUTTON
TX-00196	FLUTTER VALVE
TX-00199	2-3/8" ALUMINUM RUBBER BUTT
TX-00199-1	2-3/8" RUBBER BUTT (INCLUDED WITH TOOL)
TX-00206	1-3/4" RUBBER BUTT w/STEEL INSERT
TX-00207	THROTTLE VALVE CAP
TX-00208	2-3/4" REFRACTORY CONVEX BUTT
TX-00209	2-3/8" ALL ALUMINUM BUTT
TX-00302	THROTTLE VALVE "O" RING
TX-00396	EXHAUST DEFLECTOR
TX-00508	VALVE BLOCK
TX-00636	THROTTLE VALVE CAP GASKET
TX-00702	CYLINDER SLEEVE
TX-00749	PISTON
TX-00780	THROTTLE LEVER
TX-00781	BACKHEAD
TX-00782	THROTTLE VALVE w/ "O" RING
TX-00848	THROTTLE LEVER PIN
TX-00850	LOCKING KEY
TX-00852	LOCK NUT
TX-00862	PACKING GLAND
TX-00863	NR RETAINER WEDGE
TX-00864	NR DOWEL PIN
TX-00878	PACKING GLAND NUT
TX-00882	BACKHEAD LOCK RING
TX-00897	PACKING WASHER
TX-00928	PACKING GLAND SEAL
TX-00929	BARREL
TX-00930	PACKING SET
TX-00991	3/8" MPT x 1/4" FPT INLET BUSHING

# Service and Operations

---

## Instructions for TX-70B & 70B-NR

### AIR SUPPLY

For efficient performance, a regulated supply of clean, dry air is required (90 psi at the tool). Most air tools will give superior service if the air is moisture free and lubricated, plus down time will be minimized. If the compressor is pumping excessive water, a cooler or moisture separator (TX-MSS-400 or TX-MSS-800) should be attached to the compressor or air line. A filter, pressure regulator and Texas Pneumatic in-line lubricator (TX-0L) should be part of the air line system to the tool. The air supply line should be a minimum 1/2" I.D, hose with no restrictive couplings or fittings in the hose line. If quick disconnect air couplings are used, they should definitely be separated from the tool by the use of a hose whip (TX-2HW).

### LUBRICATION

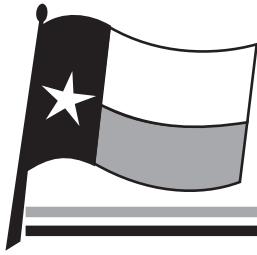
An in-line lubricator such as the Texas Pneumatic TX-0L is recommended. If an automatic lubricator is not used, it is recommended before using and after 2-3 hours use, to pour several drops of oil into the air inlet port. Texas Pneumatic Lubricating Oil (TX-PL001) or 5 wt. oil of good grade is recommended. A heavy oil will cause loss of power and efficiency. In the matter of preventative maintenance, Texas Pneumatic Tool Flush (TX-TF001) or similar solvent can be used to flush the tool. Add a couple of teaspoons to the air inlet port and operate the tool for a few seconds. It may be necessary to do this several times. The above should be done anytime the tool becomes sluggish or erratic or stops working. Flushing of the tool will most likely remove any foreign particles. After flushing and always before storage (this is most important if the air line has excessive moisture), the tool should be re-lubricated to prevent rust which will cause the tool to malfunction.

### PREPARING FOR OPERATION

***Disconnect the air line prior to any maintenance or repairs to the tool.***

The TX-70B Sand Rammer is a quality tool manufactured to close tolerances and care should be given to its maintenance, disassembly, and reassembly. The tightness of the Packing has been set at the factory, and the rammer is ready for use. The tightness of the Packing should be checked periodically thereafter. You can check this by pushing the Piston (TX-00749) in and out by hand. If the drag is too great, the Packing Gland Nut (TX-00878) should be backed off. If there is not enough drag to maintain compression and power, then the nut should be advanced. You have to loosen the Lock Nut (TX-00852) far enough so the Locking Key (TX-00850) will allow the Packing Gland Nut (TX-00878) to rotate. For disassembly of the tool, you can remove the Butt (TX-00199-1 or other) from the end of the Piston by placing an open end wrench on top of the small end of the Butt and around the Piston. Strike the wrench with a couple of hammer blows, and the Butt should fall off. The Butt is held only by the taper of the Piston. Loosen the Lock Nut (TX-00852) far enough to allow the Locking Key (TX-00850) to clear the Packing Gland Nut (TX-00878). Unscrew the Packing Gland Nut and pull the Piston out of the Barrel (TX-00929) bringing with it the Packing Gland (TX-00862), Packing (TX-00930), and Packing Washer (TX-00897). The Packing Gland Seal (TX-00928) can be pulled from the Packing Gland Nut (TX-00878) once the nut has been removed from the Barrel and Piston. To clean or replace any valve parts, remove Backhead (TX-00781). The flats of the Barrel can be placed in a vice so the Backhead can be unscrewed. If the Flutter Valve (TX-00196) is worn badly, it should be replaced. The Throttle Valve Cap (TX-00207) should be removed to inspect, clean or replace the Throttle Valve (TX-00782), Throttle Valve Spring (TX-00078) or Throttle Valve "O" Ring (TX-00302). The Throttle Valve Spring and "O" Ring should be carefully inspected and replaced periodically. Assembly of the tool is in reverse order. Light lubrication should be applied to all parts on reassembly. ***LAST, BUT MOST IMPORTANT, APPROVED SAFETY GLASSES SHOULD BE WORN AT ALL TIMES WHEN OPERATING THIS OR ANY OTHER PERCUSSION TOOL.***

---



# TEXAS PNEUMATIC TOOLS, INC.

---



**TX-2HW**



**Butts**  
(Many other sizes and shapes available.)