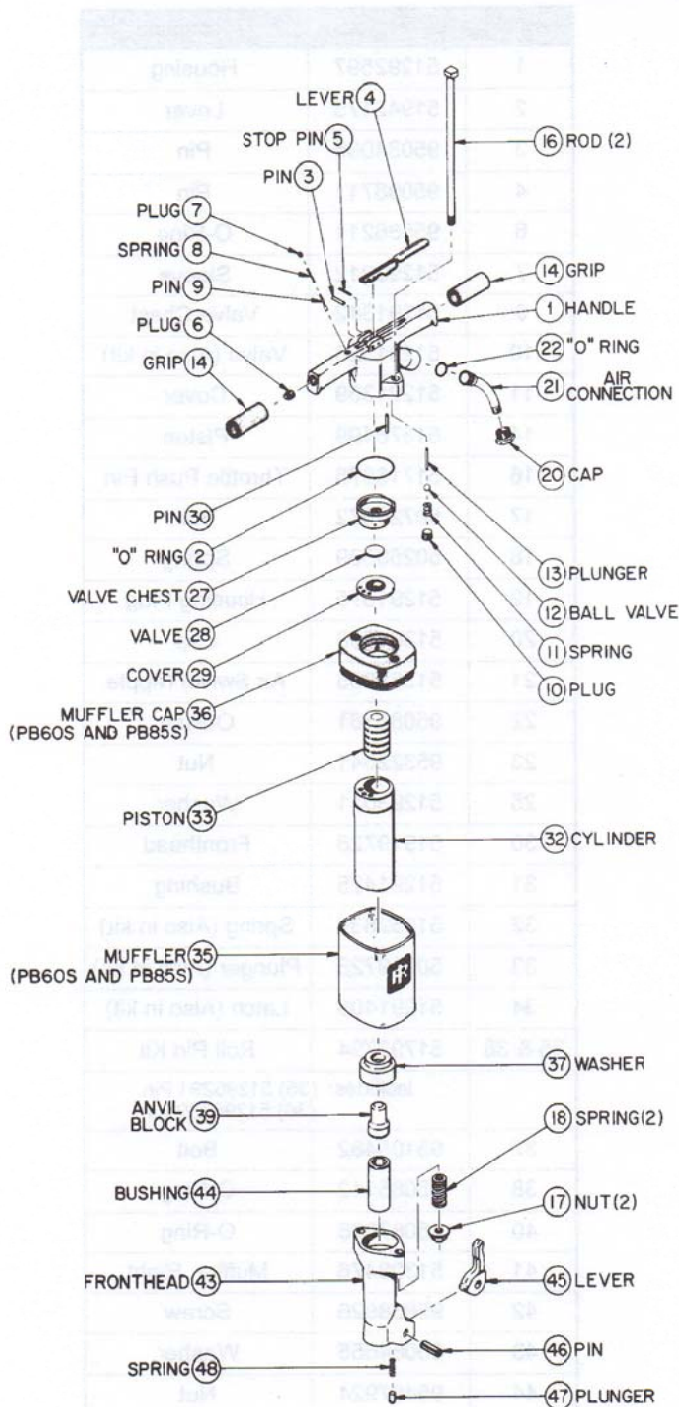


## INGERSOLL-RAND MODEL PB60, & PB85 (60LB AND 90LB HAMMERS)



LATCH KIT AVAILABLE  
USE PART NUMBER:  
**LKIT-IRPB60/85**  
Includes: 45, 46, 47, 48

Item No	Part No. PB60	Part No. PB85	Description
1	50991454	50991447	Handle
2	95086625	95086716	O-Ring-Handle
3	50997576	50997576	Pin-Lever
4	50997485	50997485	Lever
5	50997568	50997568	Lever Stop Pin
6	95033619	95033519	Oil Plug
7	95049359	95049359	Metering Plug
8	50720523	50720523	Spring Oil
9	50720556	50720556	Oil Meter Pin
10	95267191	95267191	Throttle Plug
11	50250539	50250539	Throttle Spring
12	50720572	50720572	Ball Valve
13	50720465	50720465	Throttle Plunger
14	50973312	50973312	Handle Grip
16	50775360	50775527	Assembly Rod
17	50951656	50951664	Assy. Rod Nut
19	50201094	50022631	Assy Rod Spring
20	50028117	50028117	Air Con. Cap
	50997477	50997477	Air Con Assy.
21	50974013	50974013	Swivel
22	95036161	95086161	O-Ring
27	50775345	50775493	Valve Chest
28	50720515	50720515	Disc Valve
29	50775352	50775501	Cover. V-Chest
30	50720499	50720499	Locating Pin
32	51047751	51042984	Cylinder
33	50775337	50402700	Piston
35	51076917	51076776	Muffler
36	51076925	51076784	Muffler Cap
37	50775329	50775519	Front Cylinder Washer
39	50997451	50997675	Anvil Block
41	N/A	50021575	Hammer Block- Spiker
42	N/A	50784578	Fronthead- Spiker
	50997626	50997683	FH Assy. (1-1/8")
	50997618	50809714	FH Assy. (1-1/4")
43	50997592	50997683	Frcnthead
44	50008242	50008242	Bushing (1-1/8")
	50008234	50008234	Bushing (1-1/4")
45	50997600	50997600	Steel Ret. Lever
46	50997584	50997584	Steel Ret. Lever Pin
47	50019728	50019728	Steel Ret. Plunger
48	50019579	50019579	Steel Ret. Spring