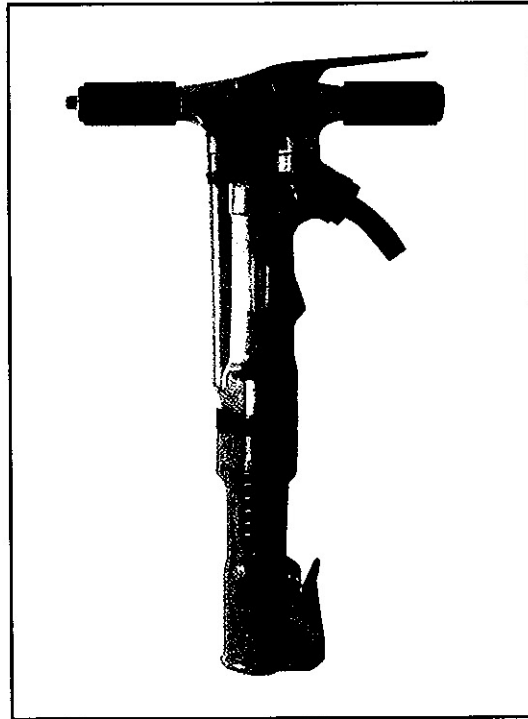


60# Paving Breaker

2

TX60PB

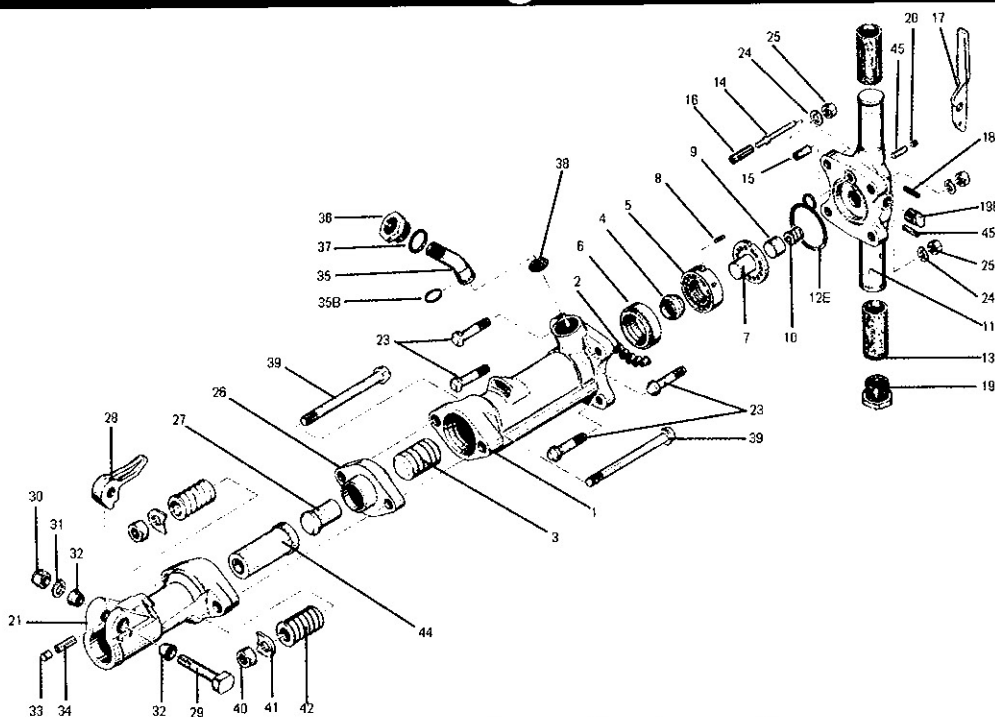


60# PAVING BREAKER

SPECIFICATIONS	Model#		TX60PB
	Net Weight	30 kg	67 lbs
	Length	651 mm	25.625 in
	Bore	57 mm	2.25 in
	Stroke	104 mm	4.0937 in
	Blows per Minute	1400	1400
	Chuck Sizes	32 x 154 mm	1 1/4 x 6 in
		28 x 154 mm	1 1/8 x 6 in
	Air Inlet (NPT)	19 mm	3/4 in
	Air Consumption *	1.70 m ³ /m	59 cfm

* ESTIMATED

60# Paving Breaker



2

ITEM#	PART#	DESCRIPTION	ITEM#	PART#	DESCRIPTION
1	52046	Cylinder	26	43437	Tappet Seat
2	48385	Cylinder Plugs (5)	27	43408	Tappet
3	43436	Piston	28	43527	Steel Retainer (Forged)
4	43186	Automatic Valve	29	43524B	Steel Retainer Bolt
5	43432	Valve Chest	30	43525	Steel Retainer Bolt Nut
6	43431	Valve Seat	31	43007	Steel Retainer Lockwasher
7	43430	Valve Guide	32	43523	Retainer Bolt Bushing (Rubber)(2)
8	43477	Valve Dowel Pin	NS	45605	Retainer Bolt Bushing (Steel)(2)
9	43474	Backhead Plunger	33	43522	Steel Retainer Plunger
10	43475	Backhead Plunger Spring	34	43521	Retainer Plunger Spring
11	52048	Backhead Bare	35	43512	Air Inlet Swivel
NS	56611C	Backhead Assbly. Complete	35B	45259	Air Inlet Swivel "O" Ring
12E	6275	Backhead "O" Ring	36	43169	Air Inlet Swivel Nut
NS	82907	Backhead Valve Port "O" Ring	37	91881	Swivel Nut "O" Ring
13	43476	Rubber Grip (2)	38	43510	Air Inlet Screen
14	46893	Throttle Valve	39	43415	Fronthead Bolt (2)
15	43395	Throttle Valve Sleeve	40	43414	Fronthead Bolt Nut (2)
16	43397	Throttle Valve Spring	41	43413	Fronthead Bolt Lockwasher (2)
17	43428	Throttle Lever	42	43412	Fronthead Bolt Spring (2)
18	43393	Throttle Lever Pin (2)	44	46898	Fronthead Bushing 1 1/8" Hex
19	43399	Oil Reservoir Plug	44	46899	Fronthead Bushing 1 1/4" Hex
20	68073	Oil Control Felt Plug	45	43473	Oil Control Felt
21	99790	Fronthead Bare	NS	99785	Fronthead w/1 1/8" Hex Bushing
23	98437B	Backhead Bolt (4)	NS	99787	Fronthead w/1 1/4" Hex Bushing
24	43143	Backhead Bolt Lockwasher (4)	NS	99786	Fronthead Assbly. w/1 1/8" Hex
25	43500	Backhead Bolt Nut (4)	NS	99788	Fronthead Assbly. w/1 1/4" Hex