



**Chicago
Pneumatic**



**High-performance
products.
Designed for you!**

**Rock Drills, Rotary
Hammers, Sinker Drills**



Rotary Hammers, Hammer Drills

The CP range of compact and lightweight plughole drills includes tools capable of drilling holes from 8 up to 44 mm and for use in light chipping applications.

The CP 0009 is the “mother” of small rotary drills. It must be one of the most copied air tools available on the market because no other design could match such a performance for such a small, easy-to-use drill. This is a key product that has made Chicago Pneumatic the leading brand of air tools in the US.

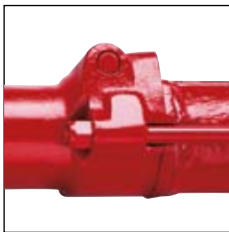
For applications where more power is needed, the CP 0014 would be the tool to use.

CP 0009

- Excellent power-to-weight ratio to drill holes more easily and faster than with comparable electric rotary hammers
- Quick-release retainer for changing the drills simply and quickly to suit all different types of drilling and chipping applications
- Built-in oiler provides continuous lubrication
- Teasing throttle for precise control
- Low air consumption
- A and F versions feature a rotation release button, converting the machine from a drill to a chipper
- AC, CS and ES versions can be converted from a drill to a chipper by changing the tool
- Cushioned piston for smooth operation and longer machine life
- Muffler available to reduce noise
- Right-hand rotation
- Equipped with an SDS adaptor, CP 0009 a, ac and cs can be used with electric hammer drill bits
- The CP 0009 is used for drilling holes from 8 to 25 mm in diameter, and up to 300 mm in depth. However, above 25 mm in diameter, we recommend first performing a test to prevent excessive wear
- Small, easy to handle

CP 0014

- High power-to-weight ratio
- Six-spline piston provides ample load-bearing surfaces for long life
- Cushioned piston for smooth operation, long life
- Spring retainer
- “D” handle with outside trigger
- Integral, large-capacity oil chamber in the handle provides continuous lubrication
- Teasing throttle for precise control
- Muffler available to reduce noise
- Right-hand rotation



CP 0009
Rotation release button



CP 0009 and CP 0014

CP 0009

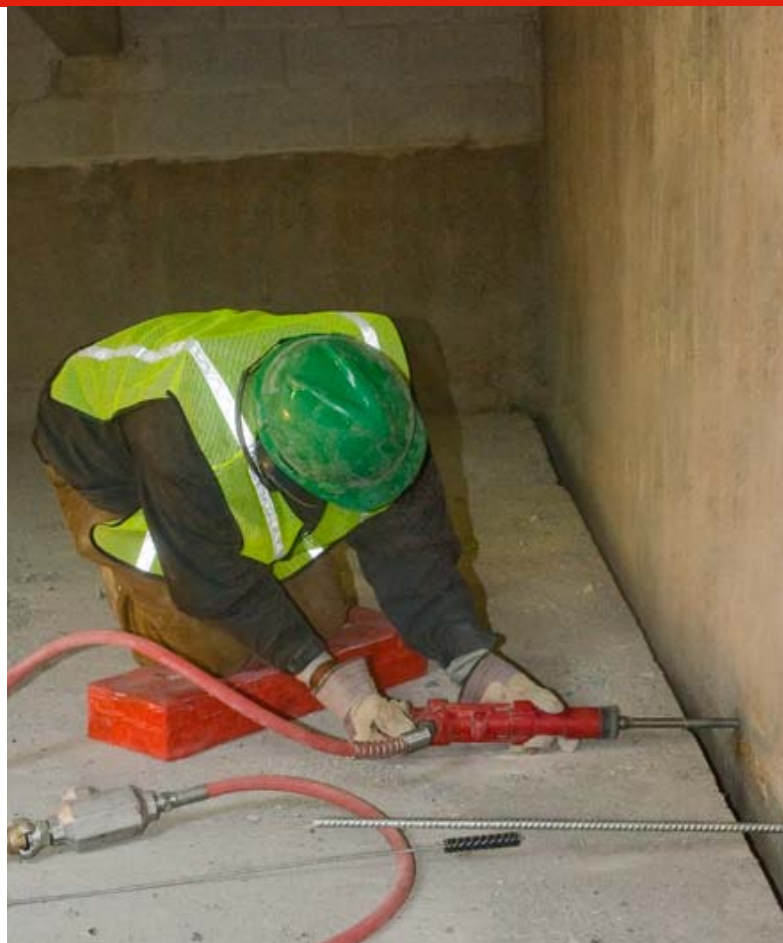
The versatile CP 0009 rotary hammers are ideal machines for a wide variety of building construction and maintenance applications such as:

- Drilling, chipping or chasing in concrete walls
- Roof drilling for the suspension of ventilation ducts in buildings, mines, tunnels etc
- Drilling holes in plaques, monuments, tombstones, etc, for the insertion of plugs, studs etc
- As a hammer, these tools can be used for chipping, scarifying, scaling and cleaning welds
- Drilling holes and chipping in the heating, water and sanitation industries, and in electrical installations

CP 0014

Ideal for drilling operations which are above the capacity of CP 0009 and where a full size rock drill would be unwieldy, the CP 0014 is the ideal tool. As a rock drill with a normal depth rating of up to 0.6 m. (more in favourable circumstances), it can be used for:

- Bolting applications such as Rawlbolts and foundation bolting
- Quarry pop shots
- Foundation bolts
- Plugging
- Demolition shots and sign-hanging
- Drilling in concrete, granite, limestone, brick work
- As a hammer it will chip concrete, cut chases enlarge cavities, trim brick faces and scabble surfaces



CP rotary hammers		CP 0009 A	CP 0009 AC	CP 0009 CS	CP 0009 E	CP 0009 ES	CP 0009 F	CP 0014 RR	CP 0014 RRBS
Weight	kg	4,0	4,0	4,5	4,0	4,5	4,0	6,5	7,0
Length	mm	375	375	380	375	380	375	480	470
Air consumption	l/s	9	9	9	9	9	9	22	22
Blows per minute	bpm	3420	3420	3420	3420	3420	3420	2520	2520
Rotation speed	rpm	189	189	189	189	189	189	165	165
Drill rate	mm/min	180 ²⁾ / 160 ³⁾	180 ²⁾ / 160 ³⁾	180 ²⁾ / 160 ³⁾	180 ²⁾ / 160 ³⁾	180 ²⁾ / 160 ³⁾	180 ²⁾ / 160 ³⁾	125 ⁴⁾	125 ⁴⁾
Max drilling diameter	mm	32	32	32	32	32	32	44	44
Max drilling depth ⁵⁾	mm	450	450	450	450	450	450	650	650
Air inlet	inch	3/8" NPTF	3/8" NPTF	3/8" BSP	3/8" BSP	3/8" BSP	3/8" NPTF	3/8" NPTF	3/8" BSP
Muffler included		No	No	Yes	No	Yes	No	No	Yes
Vibration level 3 axes (ISO 28927-10) Breaking/Drilling ¹⁾	m/s ²	20,2 / 21,2	20,2 / 21,2	20,2 / 21,2	20,2 / 21,2	20,2 / 21,2	20,2 / 21,2	35,4 / 45,3	35,4 / 45,3
Sound power level guaranteed (2000/14/EC) ¹⁾	dB(A)	-	-	103	-	103	-	-	-
Sound pressure level (ISO 11203) ¹⁾	dB(A)	-	-	88	-	88	-	-	-
Retainer type		Quick-change	Quick-change	Quick-change	Quick-change	Quick-change	Quick-change	Spring	Spring
Chuck size	mm	Rd 19x95	Rd 19x95	Rd 19x95	Rd 19x14.7 Hex x89	Rd 19x14.7 Hex x89	Spline	Hex 22x82,5	Hex 22x82,5
Part number		T022083	Z0027413	T022322	T022180	T022330	T022511	T022173	T022321

¹⁾ Important: Full details of measurement are available in the Safety and Operating Instructions of the product (part no 9800 0547 90). It can be found on www.cprintshop.com

²⁾ 19 mm drill in granite (use as guide only)

³⁾ 19 mm drill in concrete (use as guide only)

⁴⁾ 31 mm drill in hard rock/concrete (use as guide only)

⁵⁾ Depending on drilled material

Rock Drills, Sinker Drills

Chicago Pneumatic rock drills are the ideal tools for all “hand-held” drilling operations. CP rock drills have streamlined design and low air consumption, which are very much appreciated. Smooth contours, side exhausts and “flat back” make them easy to handle. High performance, robustness and low maintenance costs are

essential for stone mining. CP design includes a higher quality valve and cylinder-porting concept that helps maintain constant drilling speed throughout a long service life. Working parts are constantly protected with an effective lubrication system.

CP 0022

- Spring retainer to keep weight to a minimum
- Lightweight and powerful
- Low air consumption
- Combined blower and throttle lever for easy control

Options:

- Noise-reducing muffler

CP 0032 – CP 0069

- Tough latch retainer provides extra support to collar and reduces wear
- Blower lever for deep hole cleaning
- Integral oiler provides continuous lubrication
- Efficient lubrication
- Graduated ratchet throttle control ensures accuracy in collaring holes
- High-speed drilling
- Low maintenance

Options:

- Noise-reducing muffler
- Wet drilling



CP rock drills		CP 0022	CP 0022	CP 0032	CP 0032	CP 0032 S	CP 0032	CP 0069	CP 0069	CP 0069 WET
Weight	kg	15	15	24,5	25,5	28	25,5	27,5	27,5	29
Length	mm	475	500	560	575	575	575	610	610	620
Air consumption	l/s	22	22	48	48	48	48	61	61	61
Blows per minute	bpm	2220	2220	1980	1980	1980	1980	1860	1860	1860
Piston diameter	mm	60	60	67	67	67	67	70	70	70
Stroke length	mm	44	44	51	51	51	51	67	67	67
Rotation speed	rpm	232	232	180	180	180	180	210	210	210
Drill rate ²⁾	mm/min	150	150	230	230	230	230	260	260	260
Max drilling diameter	mm	43	43	50	50	50	50	62	62	62
Max drilling depth ³⁾	mm	2400	2400	3000	3000	3000	3000	6000	6000	6000
Air inlet	inch	1/2" swivel	1/2" swivel	3/4" swivel	3/4" swivel	3/4" swivel	3/4" swivel	3/4" swivel	3/4" swivel	3/4" swivel
Muffler included		No	No	Option	Option	Yes	Option	Option	Option	Option
Vibration level 3 axes (ISO 28927-10) ¹⁾	m/s ²	25,7	25,7	21,9	21,9	21,9	21,9	29,0	29,0	29,0
Sound power level guaranteed (2000/14/EC) ¹⁾	dB(A)	116	116	122	122	114	122	124	124	124
Sound pressure level (ISO 11203) ¹⁾	dB(A)	106	106	111	111	103	111	113	113	113
Chuck size	mm	Hex 22x82,5	Hex 22x108	Hex 22x82,5	Hex 22x108	Hex 22x108	Hex 25x108	Hex 22x108	Hex 25x108	Hex 22x108
Part number		8900 0020 01	8900 0020 02	T022318	T022117	T025431	T022319	T006661	T022259	T025423

¹⁾ Important: Full details of measurement are available in the Safety and Operating Instructions of the product (part no 9800 0901 90). It can be found on www.cpprintshop.com

²⁾ 31 mm drill in hard rock/concrete (use as guide only)

³⁾ Depending on drilled material

CP 0022, 0032 and 0069

CP 0022 – “Small sinker”

The CP 0022 gives a combination of light weight and power which makes it an ideal general purpose drill for:

- Works maintenance
- Public utilities
- Drilling from scaffolding

It is particularly useful where the air supply is limited and where light weight is a critical factor.

CP 0032 – “medium sinker”

The CP 0032 is a top performer in its class. This machine is ideal for:

- Blast hole drilling
- Excavations work
- Shafts
- Quarry drilling
- Bench mining
- Road constructions.

The CP 0032 is by far the number one choice for utility companies in the US, because of its smooth design and high performance for only 25 kg and 48 l/s of air consumption.

The CP 0032 is used in the toughest quarries around the world.

CP 0069 – “Heavy sinker”

The CP 0069 is a heavier duty machine for all rock conditions and where penetration speed is of great importance. It is hard hitting and combines high drilling speed with excellent hole cleaning ability. Typical applications:

- Blast hole drilling
- Excavations work
- Shafts
- Quarry drilling
- Bench mining
- Road constructions

The additional weight of the CP 0069 helps keep the bit on the bottom while drilling, thus demanding less from operator. For hand drilling of larger and deeper holes, choose the CP 0069.



CP 0032 and CP 0069 for wet drilling

Both the CP 0032 and 0069 can be used for wet drilling. They both have a heat-treated cylinder with a replaceable cylinder liner of steel. Flushing is ducted through two concentric tubes, the outer one for air and the inner one for water. This means that flushing air is provided as soon as the compressed air is switched on. The design prevents water from entering the percussion mechanism of the rock drill.

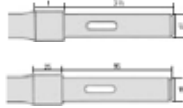
The CP 0032 and 0069 WET are the same as the standard dry machines, except that they have additional inlet water port and flushing tube inside. All machines are equipped with a 20 mm (3/4”) connection for air and a 12.5 mm (1/2”) connection for water. Standard CP 0032 and 0069 can be converted for wet drilling.

Conversion kits: **CP 0032** = R 147457
CP 0069 = Z 6544438

Steel

CP 0009 A, AC, CS

Shank: Rd 19 x 95 mm



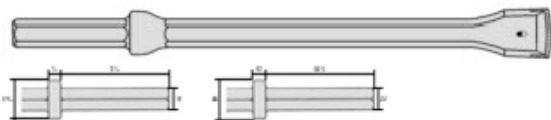
Tool type	Bit diameter	Drill depth	Total length	Part number
Plug hole drill	13 mm	200 mm	330 mm	3083 4150 00
Plug hole drill	16 mm	200 mm	330 mm	3083 4151 00
Plug hole drill	16 mm	300 mm	430 mm	3083 4151 10
Plug hole drill	16 mm	450 mm	580 mm	3083 4151 20
Plug hole drill	19 mm	200 mm	330 mm	3083 4152 00
Plug hole drill	19 mm	300 mm	430 mm	3083 4152 10
Plug hole drill	19 mm	450 mm	580 mm	3083 4152 20
Plug hole drill	22 mm	200 mm	330 mm	3083 4153 00
Plug hole drill	22 mm	300 mm	430 mm	3083 4153 10
Plug hole drill	22 mm	450 mm	580 mm	3083 4153 20
Plug hole drill	25 mm	200 mm	330 mm	3083 4154 00
Plug hole drill	25 mm	300 mm	430 mm	3083 4154 10
Plug hole drill	25 mm	450 mm	580 mm	3083 4154 20
Plug hole drill	28 mm	300 mm	430 mm	3083 4155 10
Plug hole drill	28 mm	450 mm	580 mm	3083 4155 20
Plug hole drill	32 mm	300 mm	430 mm	3083 4156 10
Plug hole drill	32 mm	450 mm	580 mm	3083 4156 20



Tool type	Tool width	Working length	Total length	Part number
Moil point	-	150 mm	255 mm	3083 4160 00
Moil point	-	275 mm	380 mm	3083 3261 00
Narrow chisel	-	150 mm	255 mm	3083 4161 00
Narrow chisel	-	275 mm	380 mm	3083 3262 00
Wide chisel	75 mm	150 mm	255 mm	3083 4165 00

CP 0014, CP 0022

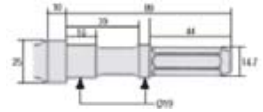
Shank: Hex 22 x 82.5 mm



Bit diameter	Length	Part number
41 mm	600 mm	715-0641,05-02
40 mm	800 mm	715-0840,05-02
40 mm	1200 mm	715-1240,05-02
39 mm	1600 mm	715-1639,05-02

CP 0009 ES

Shank: R 19 – H 14.7 x 89 mm



Tool type	Bit diameter	Drill depth	Total length	Part number
Plug hole drill*	8 mm	80 mm	110 mm	0701 0808 00
Plug hole drill*	10 mm	100 mm	130 mm	0701 1010 00
Plug hole drill*	12 mm	120 mm	150 mm	0701 1212 00
Plug hole drill	16 mm	150 mm	250 mm	0700 1416 32
Plug hole drill	19 mm	230 mm	330 mm	0700 2019 32
Plug hole drill	22 mm	230 mm	330 mm	0700 2022 32
Plug hole drill	25 mm	230 mm	330 mm	0700 2025 32
Plug hole drill	32 mm	330 mm	430 mm	0700 3032 32
Plug hole drill	38 mm	330 mm	430 mm	0700 3038 32

*Use with shank adapter

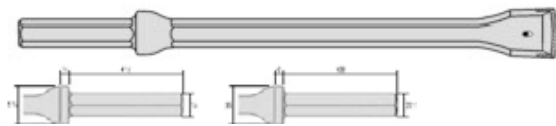
Type	Total length	Part number
Shank adapter	125 mm	0701 1001 32
Knock-out block		3085 0210 00



Tool type	Tool width	Working length	Total length	Part number
Moil point	-	210 mm	300 mm	3083 3263 00
Narrow chisel	-	210 mm	300 mm	3083 3264 00

CP 0022, CP 0032, CP 0069

Shank: Hex 22 x 108 mm



Bit diameter	Length	Part number
32 mm	400 mm	714-0432,05-02
35 mm	400 mm	714-0435,05-02
38 mm	800 mm	714-0838,05-02

Accessories



Water separator

- Minimizes water in the airline system to prevent corrosion
- Centrifugal principle to collect water from the air
- Automatic emptying of condensate

Description	Hose connection	Air flow	Part no.
European version (3/4" BSP)	20 mm	max. 61 l/s	8900 0050 00
US version (3/4" NPT)	20 mm	max. 61 l/s	8900 0050 01



Lubricator 43, Lubricator 1300

- Applicable for mineral and synthetic oils
- Pre-mounted with claw couplings
- Ejector principle for controlled and continuous lubrication
- Intricately bent oil pick-up to assure oil supply regardless of lubricator's position
- Integrated check valve to stop oil supply when airline system is not pressurized
- Integrated regulator to adopt the amount of oil to working conditions

Description	Hose inner diameter	Air flow	Oil volume	Part no.
Lubricator 1300 - European version (1" BSP)	25 mm	15 - 140 l/s	1,3 l	8900 0050 02
Lubricator 43 - US version (1" NPT)	25 mm	15 - 140 l/s	1,3 l	8900 0050 07



Red-X flat hoses

- Lower weight compared to conventional rubber hoses
- Flat & flexible when not pressurized which makes it easy to handle & set-up
- High burst pressure & tensile strength

Hose rolls					
Inner diameter	Hose roll length	Max. working pressure	Burst pressure	Thickness	Part no.
19 mm	60 m	20 bar	100 bar	2,0 mm	8900 0050 10
25 mm	60 m	20 bar	100 bar	2,5 mm	8900 0050 20

Pre-mounted hoses with claw couplings & hose clamps			
Description	Inner diameter	Length	Part no.
European claw couplings	19 mm	20 m	8099 0050 09
European claw couplings	25 mm	20 m	8900 0050 23
US claw couplings	19 mm	15 m	8900 0050 08
US claw couplings	25 mm	15 m	8900 0050 24



CP Airolene Plus Rock Drill Oil

- Readily biodegradable
- Good wear & corrosion protection properties
- Good reduction of scoring & abrasion
- Low sensitivity against temperature changes

Description	Oil volume	Part number
4 l container	4 l	8099 0201 03
4 x 4 l container	16 l	8099 0201 85



Over 100 years of experience

Since 1901 the Chicago Pneumatic name has represented high-performance tools and equipment designed for an extensive range of applications. Today, Chicago Pneumatic has a global reach, with local customer centers around the world. Chicago Pneumatic tools and air compressors are tailored to the needs of the industrial, vehicle service, and construction markets. Every day we develop and manufacture new products that are meant to meet your demands not only today, but tomorrow as well.

To learn more about our extensive range of tools, hydraulic attachments, industrial and portable compressors, accessories and workshop equipment, please visit www.cp.com.

For more detailed information and copy of CP complete catalogue, please contact:

Use only authorized parts. Any damage or malfunction caused by the use of unauthorized parts is not covered by Warranty or Product Liability.