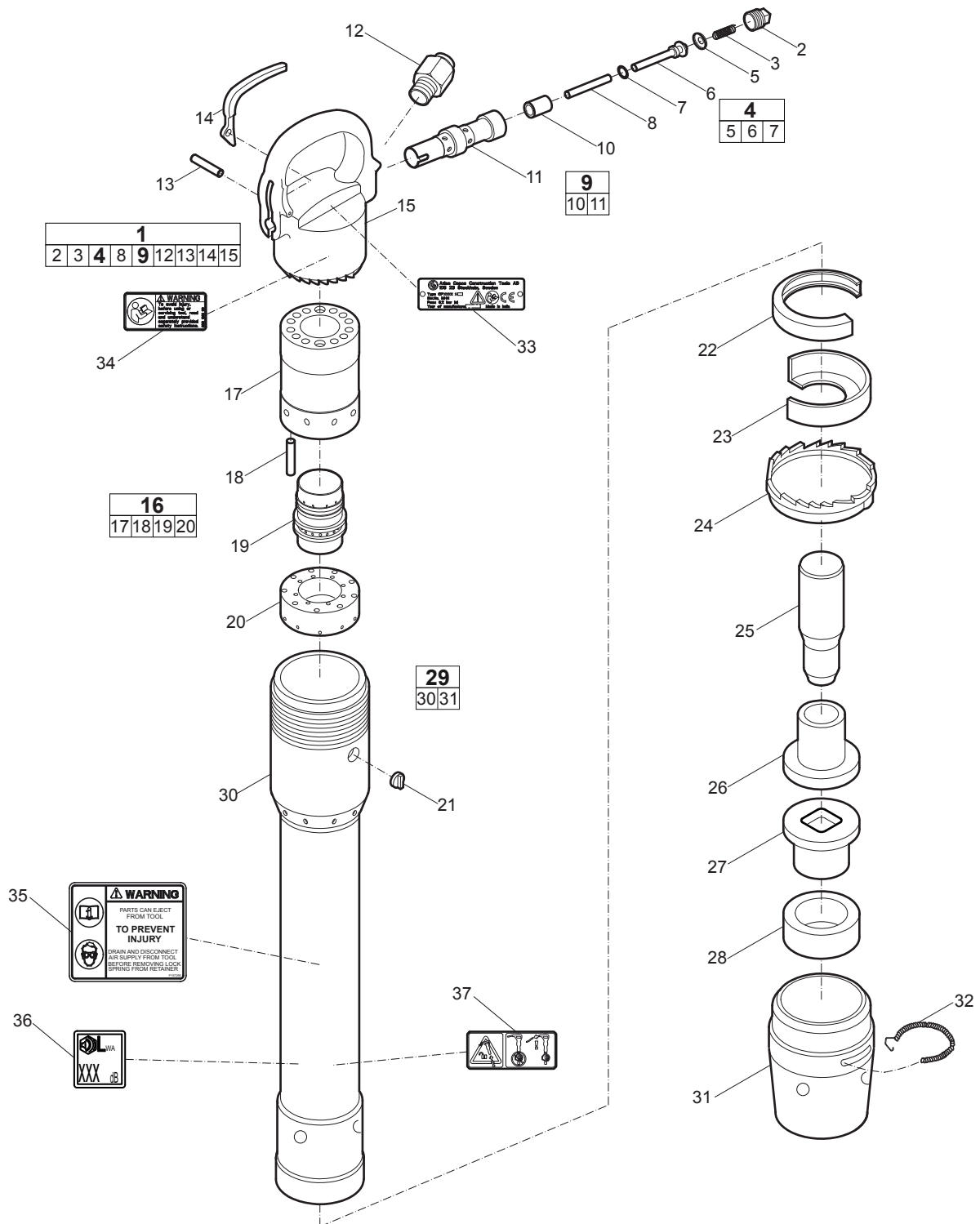
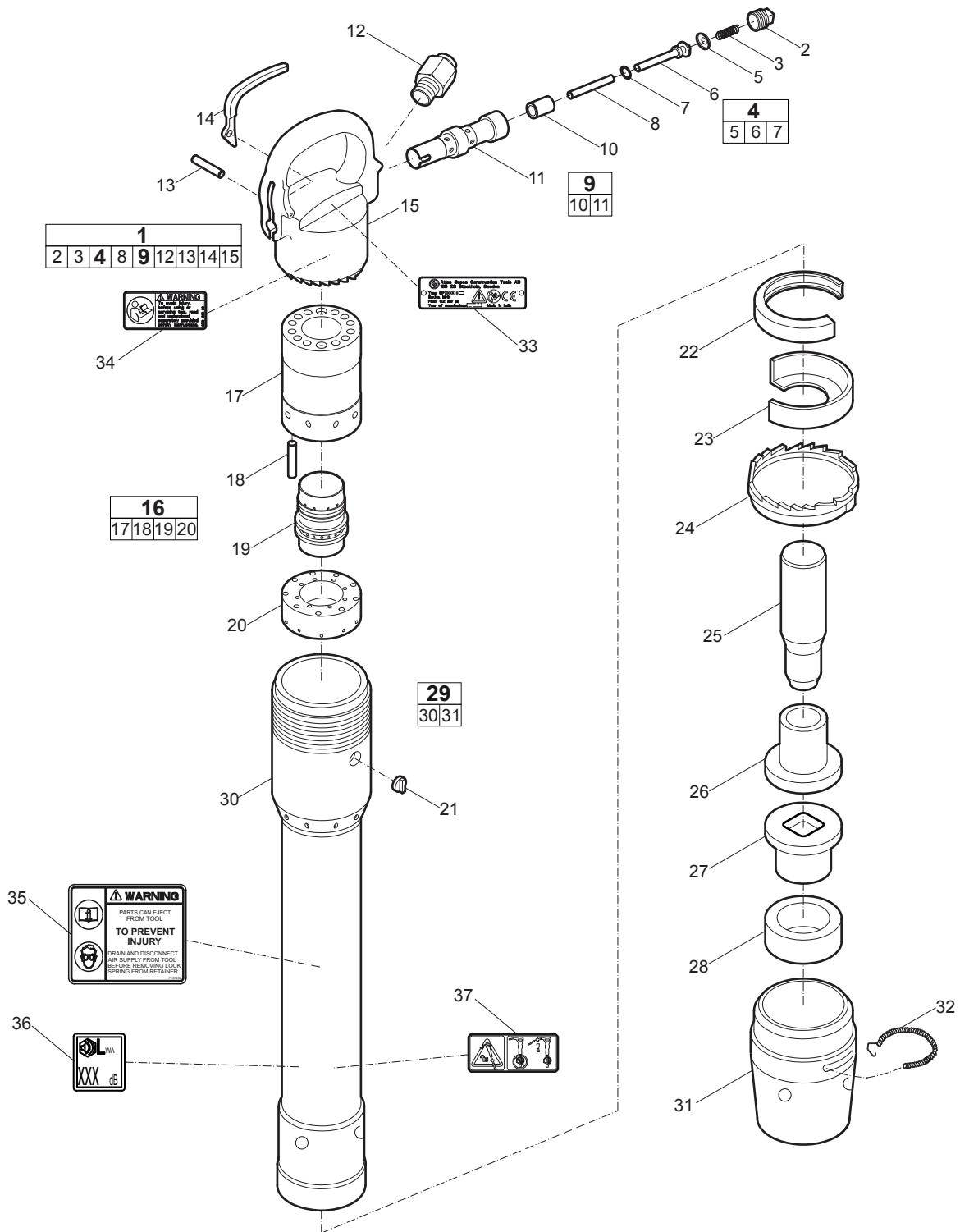


# CP 4608 D



No.	Description	Remark	Quantity	Part number
<b>1(2-3,4,8,9,12-15)</b>	<b>Handle, complete</b>		1	P007 399
2	Plug - Valve tube		1	P001 884
3	Spring - Valve		1	P001 864
<b>4(5-7)</b>	<b>Valve - Throttle, complete</b>		1	P005 153
5	Cap - O-ring		1	P092 091
6	Valve - Throttle		1	-
7	Throttle valve O-ring		1	CA08 8867
8	Pin - Push	Valve	1	P006 138
<b>9(10-11)</b>	<b>Tube - Throttle, complete</b>		1	P007 846
10	Bushing		1	-
11	Tube Throttle		1	-
12	Bushing air inlet	½" NPTF (With strainer)	1	P001 995
13	Pin - Lever		1	P005 171
14	Lever - Throttle		1	P006 137
15	Handle		1	-
<b>16(17-20)</b>	<b>Valve, complete</b>		1	P007 385
17	Case - Valve		1	P006 319
18	Dowel		1	3303 0050 86
19	Valve		1	P001 538
20	Lid - Valve case		1	P006 320
21	Key - Lock collar		1	P001 430
22	Clip - Spring	Lock collar	1	P001 355
23	Deflector - Exhaust		1	P001 389
24	Collar - Lock		1	P001 399
25	Piston	8" Stroke	1	3303 0050 94
26	Sleeve - Upper		1	P156 988
27	Sleeve - Lower		1	P072 333
28	Bumper		1	3303 0051 03
<b>29(30-31)</b>	<b>Cylinder, complete</b>		1	3303 0053 80
30	Cylinder		1	-
31	Retainer		1	3303 0053 40
32	Spring - Lock		1	P073 942
33	Data plate		1	-
34	Safety label		1	3310 1602 00
35	Warning label		1	P157 290
36	Noise level label		1	-
37	Eject warning label		1	3310 1572 00

# CP 4611 D



No.	Description	Remark	Quantity	Part number
<b>1(2-3,4,8,9,12-15)</b>	<b>Handle, complete</b>		1	P007 399
2	Plug - Valve tube		1	P001 884
3	Spring - Valve		1	P001 864
<b>4(5-7)</b>	<b>Valve - Throttle, complete</b>		1	P005 153
5	Cap - O-ring		1	P092 091
6	Valve - Throttle		1	-
7	Throttle valve O-ring		1	CA08 8867
8	Pin - Push	Valve	1	P006 138
<b>9(10-11)</b>	<b>Tube - Throttle, complete</b>		1	P007 846
10	Bushing		1	-
11	Tube Throttle		1	-
12	Bushing air inlet	½" NPTF (With strainer)	1	P001 995
13	Pin - Lever		1	P005 171
14	Lever - Throttle		1	P006 137
15	Handle		1	-
<b>16(17-20)</b>	<b>Valve, complete</b>		1	P007 385
17	Case - Valve		1	P006 319
18	Dowel		1	3303 0050 86
19	Valve		1	P001 538
20	Lid - Valve case		1	P006 320
21	Key - Lock collar		1	P001 430
22	Clip - Spring	Lock collar	1	P001 355
23	Deflector - Exhaust		1	P001 389
24	Collar - Lock		1	P001 399
25	Piston	11" Stroke	1	3303 0050 93
26	Sleeve - Upper		1	P156 988
27	Sleeve - Lower		1	P072 333
28	Bumper		1	3303 0051 03
<b>29(30-31)</b>	<b>Cylinder, complete</b>		1	3303 0053 81
30	Cylinder		1	-
31	Retainer		1	3303 0053 40
32	Spring - Lock		1	P073 942
33	Data plate		1	-
34	Safety label		1	3310 1602 00
35	Warning label		1	P157 290
36	Noise level label		1	-
37	Eject warning label		1	3310 1572 00